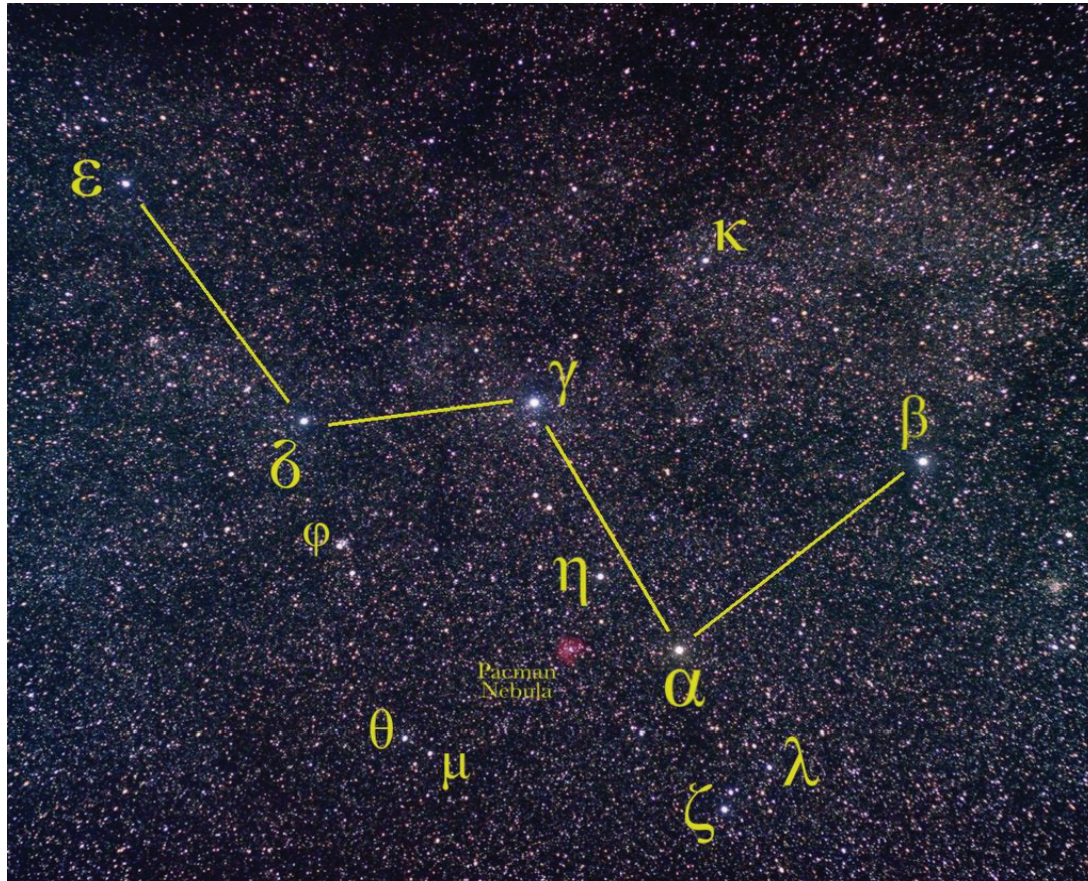
















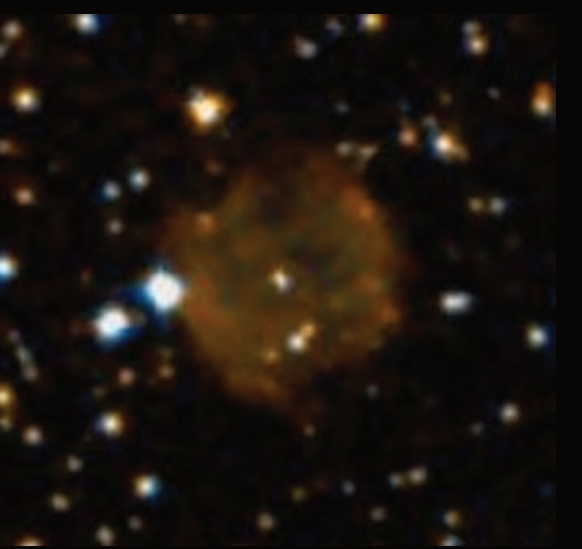


CASSIOPEE



Noms	Type
IC10	Galaxie
M52 / NGC 7654	Amas ouvert
NGC457 amas du hibou	Amas ouvert
NGC7789	Amas ouvert
Maffei 1	Galaxie
NGC185	Galaxie
Ngc 278	Galaxie
IC289	NP
Pk119+0.1	NP
Pk114-4.1, Abell 82	NP
Pk122-4.1, Abell 2	NP
Abell 6 (PK 136+4.1)	NP
HFG1 PK 136+05	NP
IC1747	NP
Pk112-10.1, Abell 84	NP
Abell 3, PK131+2.1	NP
PK128-4.1	NP
SH2-200	NP
NGC7635 , la bulle	Nebuleuse
IC1795	Nebuleuse
Sh2-157	Nebuleuse
IC1805	Nebuleuse
IC1848	Nebuleuse
IC59 / 63	Nebuleuse
NGC281	Nebuleuse
vdB 1	Nebuleuse

IC10	M52 / NGC 7654	NGC457 amas du hibou	NGC7789
0h20m / +59° 17' 11.8mag / 8,0 × 7,0'	23h24m / +61°35' 6.9 mag / 13.0x13.0'	1h19m / +58°17' 6.4 mag / 13.0x13.0'	23h57m / +56°42' 6.7 mag / 16.0x16.0'
			
Maffei 1	NGC185	Ngc 278	
2h36m / +59°39' 11.4 mag / 5.0x3.0'	0h38m / +48°20' 9.2 mag / 12.5x10.4'	0h52m / +47°33' 10.7 mag / 2.4x2.4'	
			

IC289	Pk119+0.1	Pk114-4.1, Abell 82	Pk122-4.1, Abell 2
3h 10m / +61° 19' 12 mag / 0,6'	0h20m / +62°59' 14.7 mag / 0.8x0.3'	23h45m / +57°03' 15.2 mag / 1.5x1.5'	0h45m / +57°57' 0.5x0.5'
			
Abell 6 (PK 136+4.1)	HFG1 PK 136+05	IC1747	Pk112-10.1, Abell 84
2h 58' / +64° 30' 15 mag / 3.1'		1h57m / +63°19' 12.0 mag / 0.3x0.3'	23h47m / +51°23' 14.4 mag / 2.0x2.0'
			

Abell 3, PK131+2.1	PK128-4.1	SH2-200	
2h12m / +64°09' 16mag /	1h30m / +58°24' 10.0x3.0'	3h 6m / 62°37' 6'	
			

NGC7635 , la bulle

23h20m / +61°12'

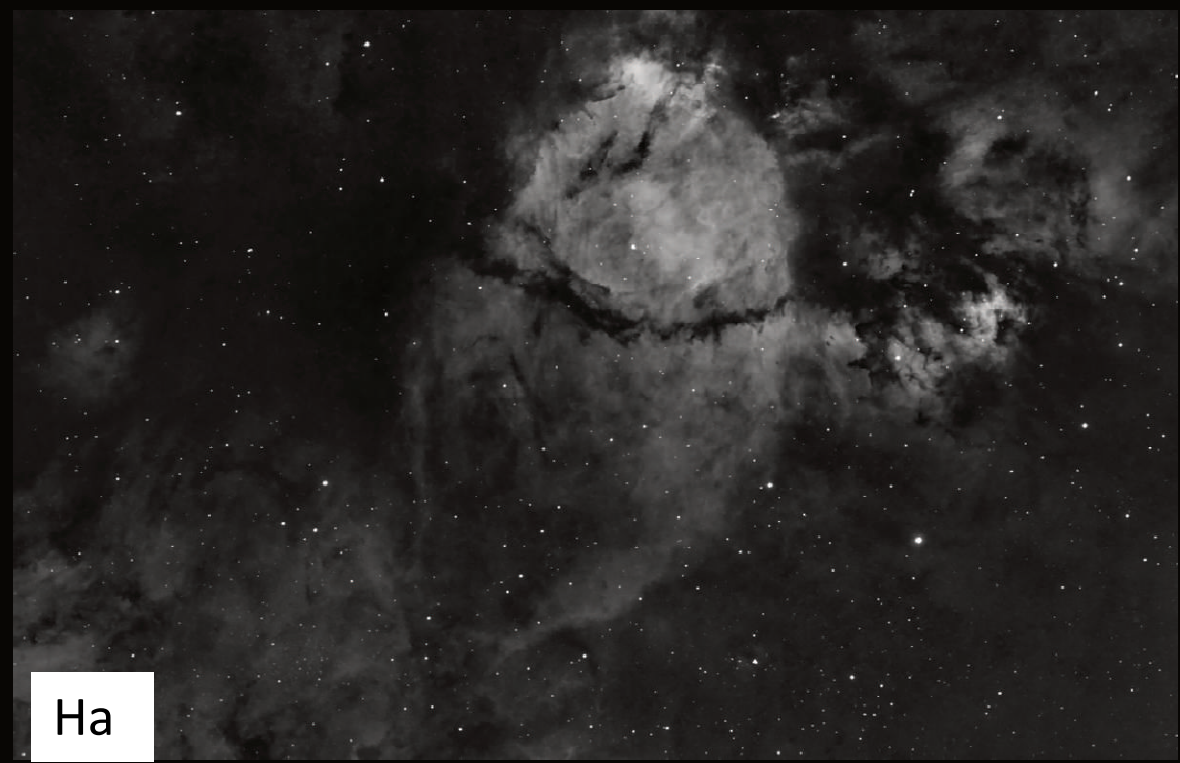
10.0 mag / 15.0x8.0'



IC1795

2h26m / 62° 04'

7 Mag / 70'



Ha



Sh2-157

23h15m / +60°10' 60.0x50.0'



www.astronomy.com
Copyright: J.P. Meisinger

Sh2-157

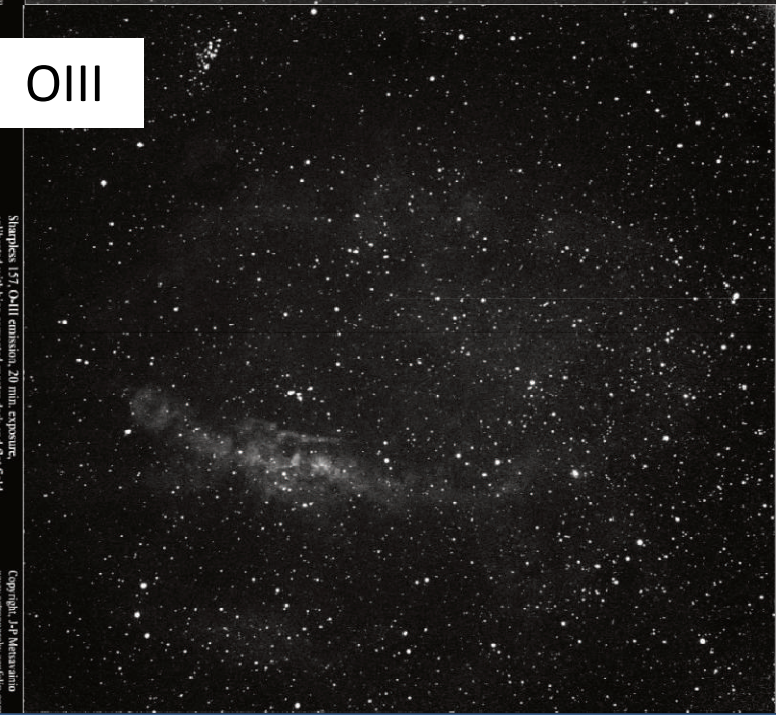
Ha



Sharpless 157, H-alpha emission, 20 min. exposure,
calibrated with bias corrected master dark and flat field.
Only processing is nonlinear stretching to show the image.

Copyright: J.P. Meisinger
www.astronomy.com

OIII



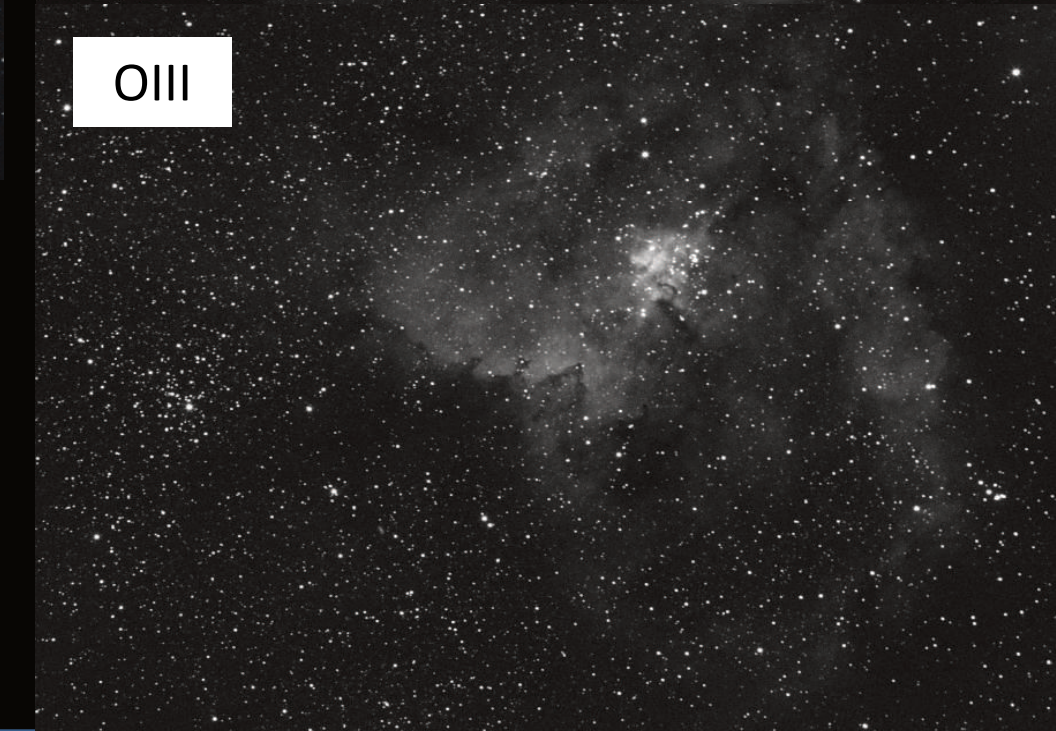
Sharpless 157, OIII emission, 20 min. exposure,
calibrated with bias corrected master dark and flat field.
Only processing is nonlinear stretching to show the image.

Copyright: J.P. Meisinger
www.astronomy.com

IC1805

2h 51m / 60° 26'

6 mag / 200'



Ha

OIII



IC1848

2h51m / 60° 26'

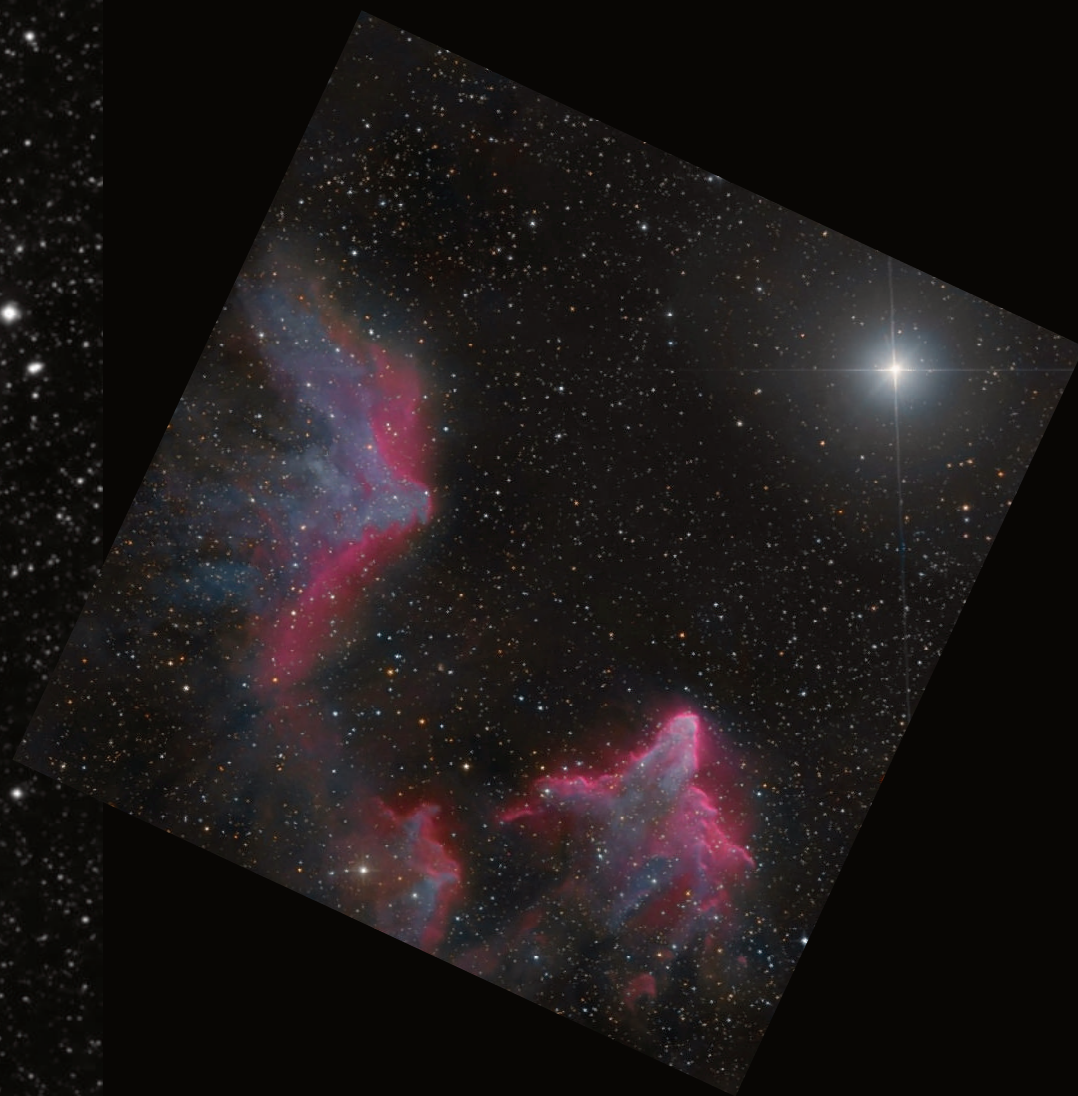
6 mag / 60'



IC59 / 63

0h57m / +61°08'

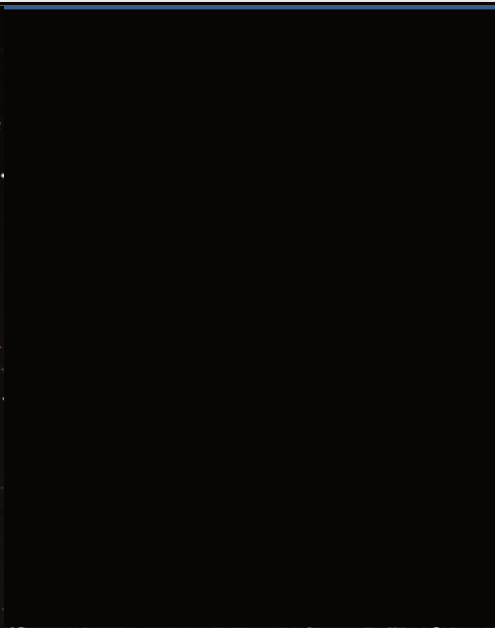
10.0x10.0'



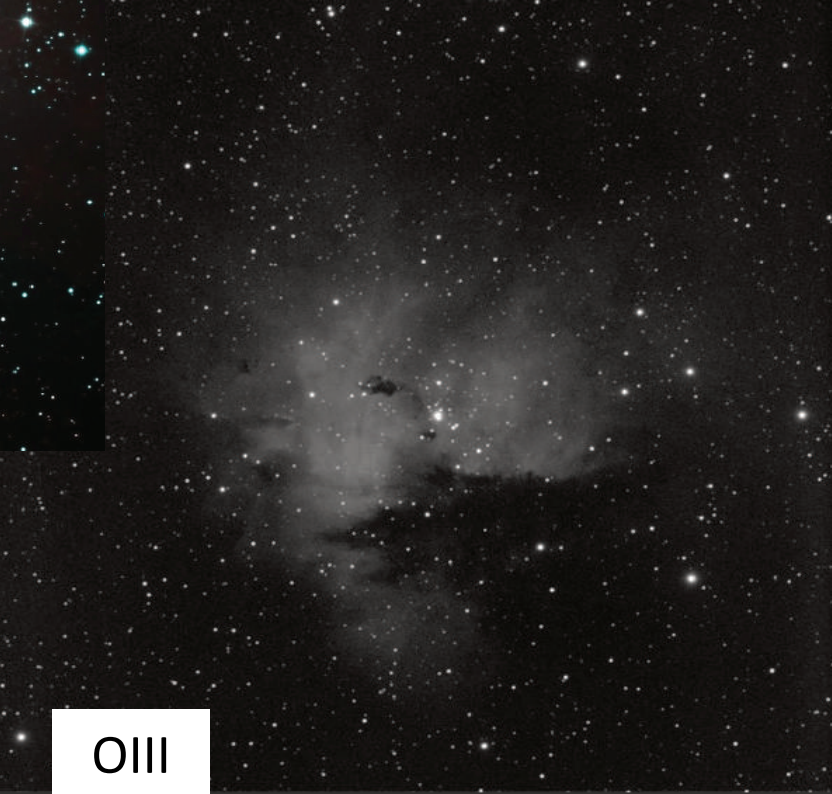
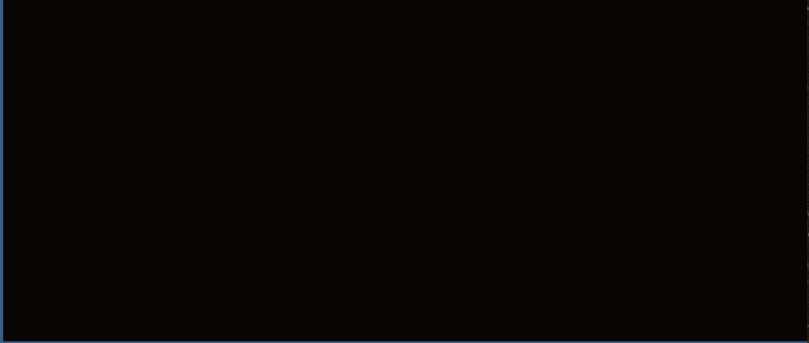
NGC281

0h52m / +56°33'

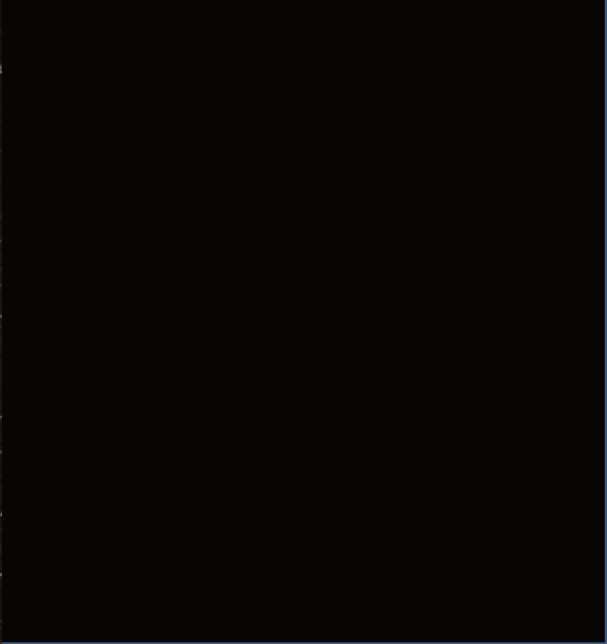
7.3 mag / 35.0x35.0'



Ha



OIII



**vdB 1 &
HH164**

0h10m / +58°46' 5.0x5.0'

